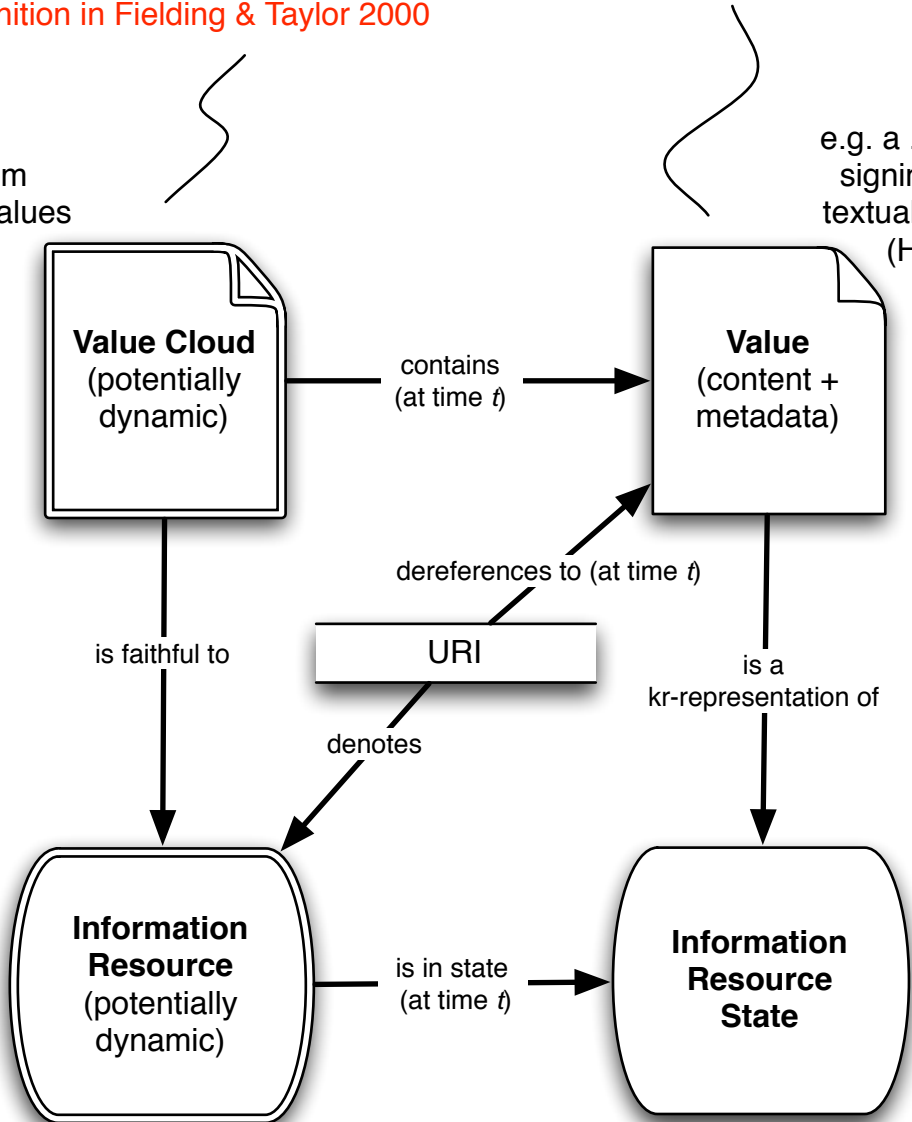


a Value is something that could be a kr-representation of an IR state; i.e. a kr-representation is a Value that kr-represents some IR state

'value cloud' is same as 'resource' in the sense of the formal definition in Fielding & Taylor 2000

a function from time to sets of values

e.g. a .png of the signin page or textual transcript (HTML)



function from time to states; e.g. what's written on the sign-in page at Vorpall Gallery (varies as people sign in)

e.g. what the sign-in page looks like/says at time t